



SHARC Multi-sports club

SHARC 30 Facility development plan - Phase 1

Stone Hockey Club Vision



Stone Hockey Club Teams:

2021

Overall membership 100 Seniors, 130 Juniors.

Saturday Hockey

5 Senior Mens

3 Senior Ladies

2 Junior

Other Hockey

Veterans

Junior U8-18's

Summer Hockey

Hockey Heroes

Back to Hockey

2025

Saturday Hockey

7 Senior Mens

5 Senior Ladies

3 Junior

Other Hockey

Veterans

Junior U8-18's

Summer Hockey

Hockey Heroes

Back to Hockey

Mixed

Indoor

Talent Centre

SHC is a thriving, financially viable, family friendly, sociable hockey club which is well respected for providing hockey for all within the local and wider community with modern, safe and sustainable facilities.

Elements and strategies

1. Management, governance & compliance (Leadership and people)

- > Creation of management structure that enables and supports the aims of the club providing clear leadership and direction for the club.
- > Achieve and maintain required and regulatory and reporting compliance.
- > Ensure robust club policies and procedures for safeguarding, behavior and management processes.
- > Establish a succession planning process for key roles within the club.

2. Hockey development (Ways to play and stretching)

- > Provision and effective delivery of a player and coaches development syllabus.
- > Average league position increased by 2 divisions.
- > Juniors representation at all EH competition age groups.
- > Provision of safe and enjoyable hockey for non-performance Ladies and Mens sides.
- > Vets and Mixed representation at EH competitions.
- > Explore and provide new hockey formats to broaden the offering to the community.

3. Participation and membership

- > Increase participation and membership levels across all age groups and sections of the club.

4. Facilities

- > To provide modern and safe facilities that support the development of the club and its members.

5. Revenue

- > To generate sufficient revenue to support the sustained developmental and operational costs of the club through identification, development and management of new and existing revenue streams.

6. Marketing and communication

- > To establish an identity and brand for the hockey club that its members are proud of and that is recognized within the local community.
- > Active presence on all relevant social media platforms and best in class official website.



Stone Rugby Club Vision



Stone Rugby Club Teams:

2021

Overall membership 85 Seniors, 60 Mini/Juniors.

Main Rugby

2 Senior Mens

1 Senior Ladies

Other Rugby

M&J Teams

Didi start-up

U7/8

U9

Girls U13/15

2025

Main Rugby

3 Senior Mens

2 Senior Ladies

1 Vets Mens

1 Mixed Touch Team

Other Rugby

M&J Teams

All Age Groups

Stone Rugby Union football Club provides a safe, friendly environment that inspires mutual respect, sportsmanship, and trust, to enjoy the game of Rugby Union Football. Creating a strong club identity across all teams from the Minis and Juniors to Seniors whilst promoting the Club to the wider community.

Elements and strategies

1. Governance management

- > Ensure all positions of responsibility within the club management and subcommittee structure are filled in line with Club structure and RFU Golden Roles.
- > Provide correct and proper recording in compliance with Club and RFU policy procedures.
- > Manage the financial activity on behalf of the Club, create and manage budgets.
- > To generate sufficient to supports the sustained developmental and operational costs of the Club. Identify, develop, and manage new opportunities and existing revenue streams.

2. Playing

- > Provision competitive league or social matches in all levels of the club.
- > Provision of RFU qualified coaching at all levels.
- > Provision of the necessary facilities and maintained equipment for training and matches.
- > Promote the fundamental values of teamwork and fair play in representing the Club.

3. Facilities

- > To provide modern, safe fit for purpose facilities that support the development of the club and its members.

Current Facility

Our current home.
Enson Lane,
Stone,
Staffordshire.



Development Phases

- ✓ 1. Ditch and drainage
- ✓ 2. Field levelling
- 3. Junior football provision
- 4. New entrance
- 5. New clubhouse
- 6. Astroturf fencing and spectator area
- 7. Car park extension
- 8. Second astroturf and lighting upgrade
- 9. 3G synthetic rugby pitch



Development Phases



- ✓ **1. Ditch and drainage**
- 2. Field levelling
- 3. Junior football provision
- 4. New entrance
- 5. New clubhouse
- 6. Astroturf fencing and spectator area
- 7. Car park extension
- 8. Second astroturf and lighting upgrade
- 9. 3G synthetic rugby pitch



Completed September 2020

Development Phases



1. Ditch and drainage

✓ **2. Field levelling**

3. Junior football provision

4. New entrance

5. New clubhouse

6. Astroturf fencing and
spectator area

7. Car park extension

8. Second astroturf and
lighting upgrade

9. 3G synthetic rugby pitch



Completed September 2020



Development Phases



1. Ditch and drainage
2. Field levelling
3. Junior football provision
4. New entrance
5. New clubhouse
6. Astroturf fencing and spectator area
7. Car park extension
8. Second astroturf and lighting upgrade
9. 3G synthetic rugby pitch



Estimated Cost - £2k

SBC / SHC agreement signed Feb 2020

Set up costs and marketing to enable future revenue opportunity & further multi-sport growth

Target date Summer 2021



Development Phases



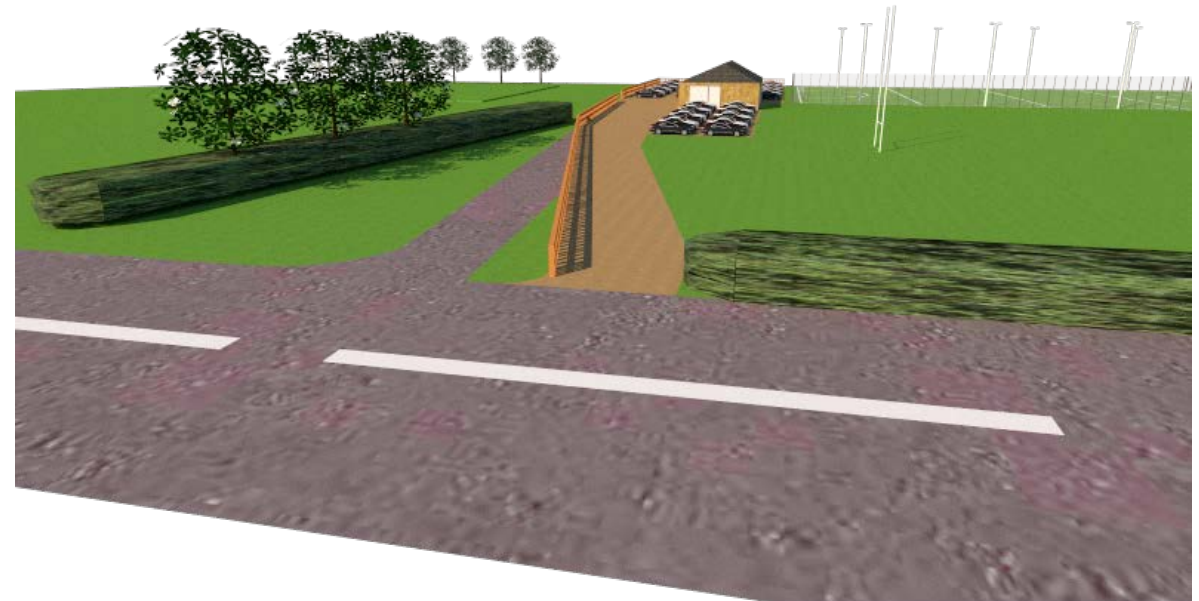
1. Ditch and drainage
2. Field levelling
3. Junior football provision
- 4. New entrance**
5. New clubhouse
6. Astroturf fencing and spectator area
7. Car park extension
8. Second astroturf and lighting upgrade
9. 3G synthetic rugby pitch



Estimated Cost - £30k

Stafford Borough Council Mandate to ensure safety of vehicles from A34

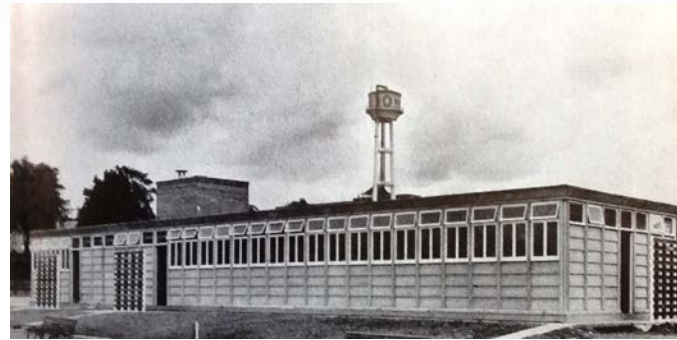
Target Completion Date Spring 2022



Development Phases



1. Ditch and drainage
2. Field levelling
3. Junior football provision
4. New entrance
- 5. New clubhouse**
6. Astroturf fencing and spectator area
7. Car park extension
8. Second astroturf and lighting upgrade
9. 3G synthetic rugby pitch



Estimated Cost -
£550k

Architect and design
drawings underway

Target Finish Date
Autumn 2022



Development Phases



1. Ditch and drainage
2. Field levelling
3. Junior football provision
4. New entrance
5. New clubhouse
6. Astroturf fencing and spectator area
7. Car park extension
8. Second astroturf and lighting upgrade
9. 3G synthetic rugby pitch



Estimated Cost - £45k

Current fence 30 years old and in poor repair

No safe spectator viewing areas

Target Date August 2021



Development Phases



1. Ditch and drainage
2. Field levelling
3. Junior football provision
4. New entrance
5. New clubhouse
6. Astroturf fencing and spectator area
7. Car park extension
8. Second astroturf and lighting upgrade
9. 3G synthetic rugby pitch



Estimated Cost - £10k

Increases car parking by 50 cars to accommodate increased peak time usage Saturday & Sunday

Target date Summer 2022



Development Phases



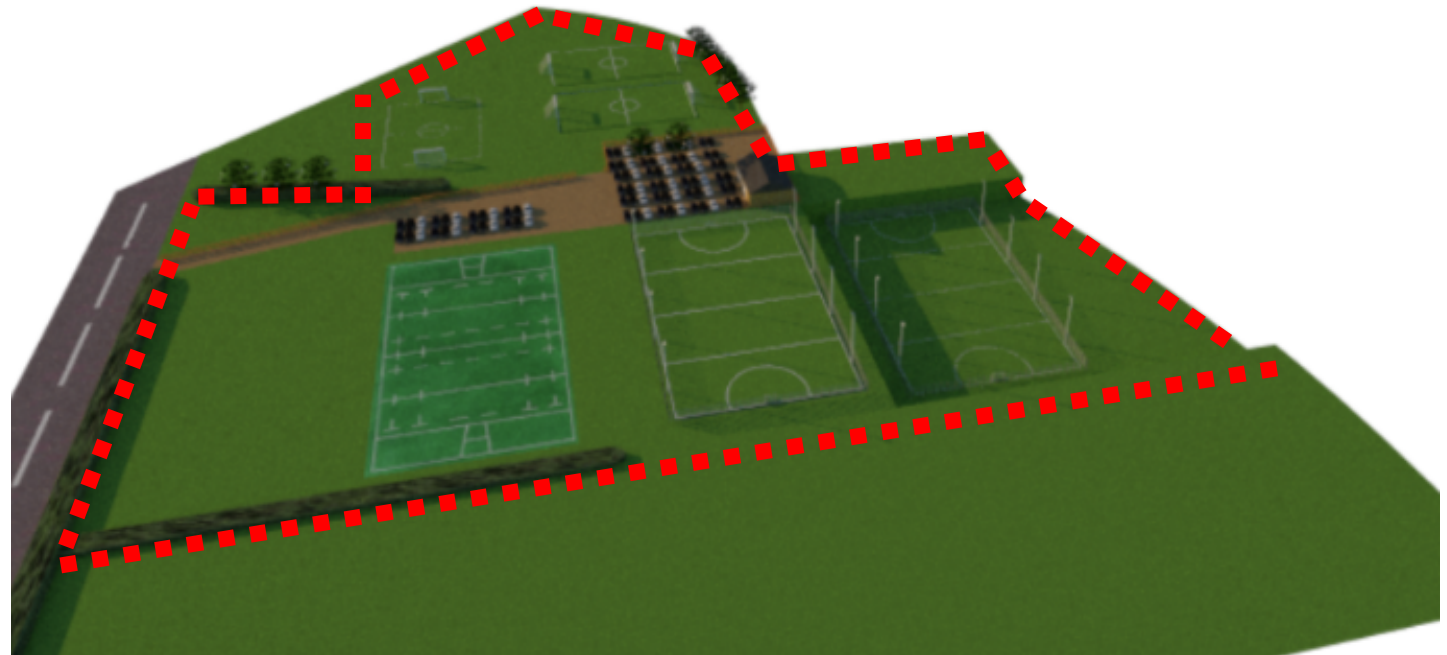
1. Ditch and drainage
2. Field levelling
3. Junior football provision
4. New entrance
5. New clubhouse
6. Astroturf fencing and spectator area
7. Car park extension
8. Second astroturf and lighting upgrade
9. 3G synthetic rugby pitch

Estimated Cost - £750k

Club must think to future, current Astroturf at capacity for hockey.

Target date Summer 2025

**SHARC are exploring multiple land options to accommodate*



Development Phases

1. Ditch and drainage
2. Field levelling
3. Junior football provision
4. New entrance
5. New clubhouse
6. AstroTurf fencing and spectator area
7. Car park extension
- 8. Second astroTurf and lighting upgrade**
9. 3G synthetic rugby pitch



Estimated Cost - £30k
Current AstroTurf lights over 30 years old
Not efficient or suitable standard
Target date Summer 2025

Development Phases



1. Ditch and drainage
2. Field levelling
3. Junior football provision
4. New entrance
5. New clubhouse
6. Astroturf fencing and spectator area
7. Car park extension
8. Second astroturf and lighting upgrade
9. 3G synthetic rugby pitch

Estimated Cost - £600k

Supports club expansion plans

Enables substantial additional hire revenue

Target date Summer 2026



Phased Costing – Funding Challenge



Represents a

£2.1m

investment portfolio.

**SHARC Funding Committee
implemented.**



Phase	Investment Estimate
Football expansion	£2,000
Entrance & Clubhouse	£600,000
Astro Fence	£45,000
Car Park Extension	£10,000
Second Astro	£550,000
Pitch 1 Relay	£200,000
Floodlights	£28,500
3G Rugby Conversion	£600,000
Land Acquisition for Future Phases	£100,000
TOTAL	£2,135,500
<i>Less</i>	
Section 106 & SBC Grant	£475,000
BALANCE TO RAISE	£1,660,500

**We need
YOUR help
to deliver
this vision!**

SHARC Funding Committee Implemented

> Exploring large scale investment opportunities using expert funding bodies.

- + Stafford Borough Council
- + HS2 Grants
- + Corporate Funding Grants

> What can we do?

- + Buy a Brick / Astro square Scheme live
- + Easy-Fundraising – **Use it !!!**
- + Other opportunities to be communicated to all during March

> Our new SHARC website is now LIVE!

Visit us at: www.sharc-sports.co.uk



Thank You for Your Interest

Keep checking our website for more SAHRC updates